



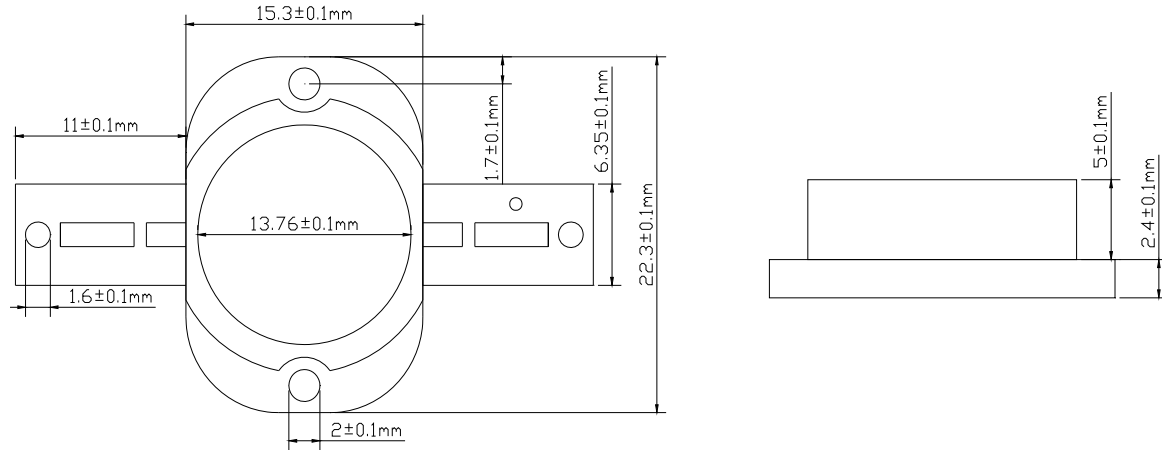
## SPECIFICATION FOR APPROVAL

Customer	_____
PartName	HIGH POWER-LED
Styles	SD-P10WW649910600
Description	10W / White / LED
Sample's NO:	_____
	(Client Admit )

Snowdragon Industrial Co.,Ltd  
Customer service: 86-0755-83918797 13798311026  
Shenzhen office address :

R704, Block 4 , Dexingcheng Village Shuijing Town Buji District  
Longgang City Shenzhen Province Guangdong China  
Fax:+86-755-83062997  
Website: [www.snowdragonledhk.com](http://www.snowdragonledhk.com)  
Email: [Snowshirley8@gmail.com](mailto:Snowshirley8@gmail.com)

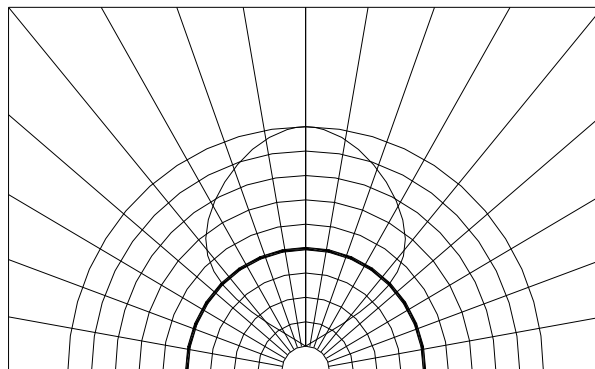
## Package Dimensions



### Notes

1. All dimensions are in millimeters (inches).
2. Tolerance is  $\pm 0.25 \text{ mm}$  ( $0.010''$ ) unless otherwise noted.
3. Protruded resin under flange is  $1.0 \text{ mm}$  ( $0.04''$ ) max.
4. Lead spacing is measured where the leads emerge from the package.
5. Specifications are subject to change without notice.

## Spatial Distribution



PART NUMBER	REV	PAGE	DATE
SD-P10WW649910600	R101	1/3	2009-03-15

## SPECIFICATION FOR APPROVAL

### Electrical / Optical Characteristics at TA=25°C

Parameter	Symbol	Min.	Typ.	Max.	Unit	Test Condition
Luminous Intensity	$\Phi$	600	650	700	lm	IF = 1000mA
Viewing Angle	$2\theta$	1/2	120		deg	IF = 1000mA
Dominant Wavelength	Tc				K	IF = 1000mA
Spectral Line Half-Width	$\Delta\lambda$	6000	6500	7000	nm	IF = 1000mA
Forward Voltage	VF	9	10	11	V	IF = 1000mA
Reverse Current	IR			20	$\mu$ A	VR = 5V

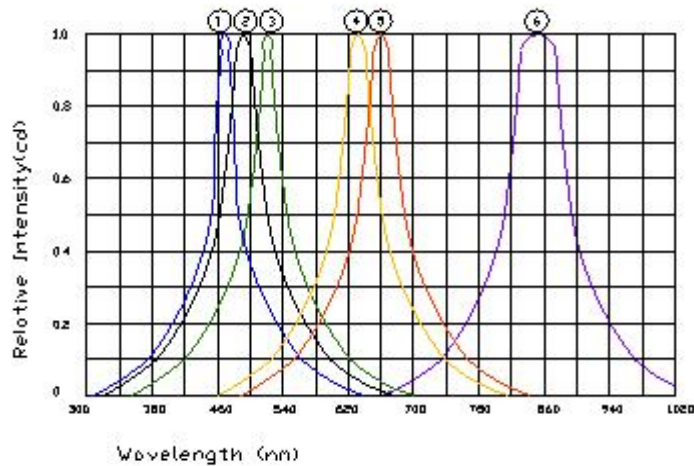
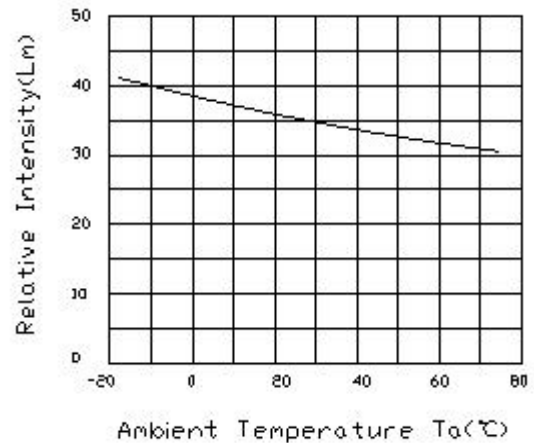
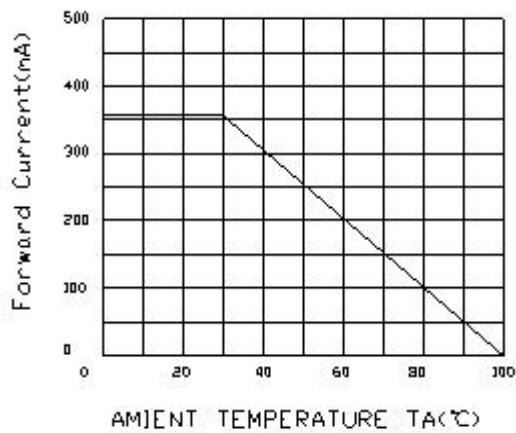
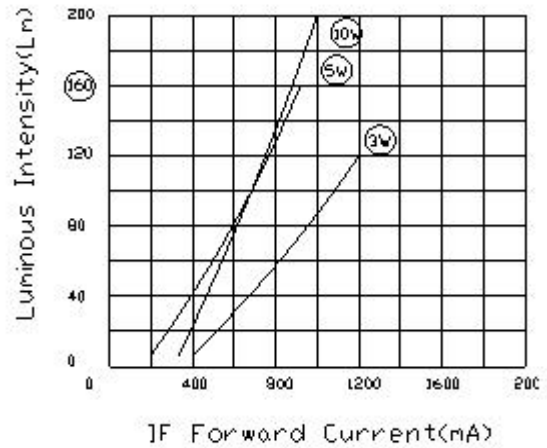
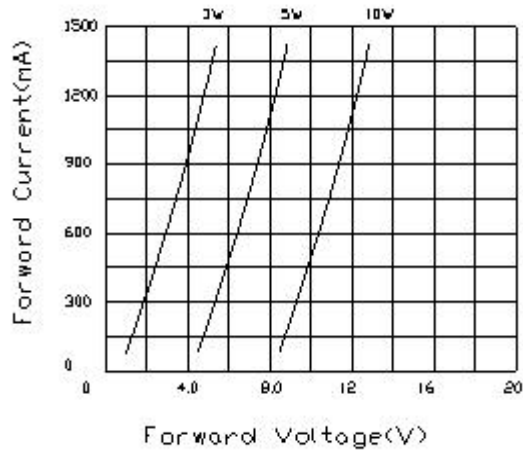
### Absolute Maximum Ratings at TA=25°C

Parameter	Maximum Rating
Power Dissipation	10W
Peak Forward Current (1/10 Duty Cycle, 0.1ms Pulse Width)	3000mA
Continuous Forward Current	1000mA
Derating Linear From 30°C	3.25mA/°C
Reverse Voltage	5V
Operating Temperature Range	-20°C to + 80°C
Storage Temperature Range	-30°C to + 100°C
Lead Soldering Temperature [1.6mm(.063") From Body]	260°C for 5 Seconds

PART NUMBER	REV	PAGE	DATE
SD-P10WW649910600	R101	2/3	2009-03-15

# SPECIFICATION FOR APPROVAL

## HIGH POWER LED Typical Electro-Optical Characteristics



- ① Blue Lamp(InGaN)
- ② White Lamp(InGaN)
- ③ Pure Green Lamp(InGaN)
- ④ Yellow Green Lamp(AlInGaP)
- ⑤ Red Lamp(AlInGaP)
- ⑥ Infrared Lamp(850nm)

