



[www.snowdragonledhk.com](http://www.snowdragonledhk.com)

Good quality & Fast delivery

## Snowdragon Industrial Co.,Ltd

### DATA SHEET

**MODEL N.O.: SDUV1W365-370-YX-A**

**ENG. N.O.: 12051301**

**Description:**

- **Wavelength: 365-370nm**
- **Luminous Flux: 7-8lm**
- **Forward Voltage:3.8V**
- **Viewing Angle:140°**
- **Test condition: 350mA**

PREPARED BY	CHECKED BY	APPROVED BY
CUSTOMER APPROVED SIGNATURES		



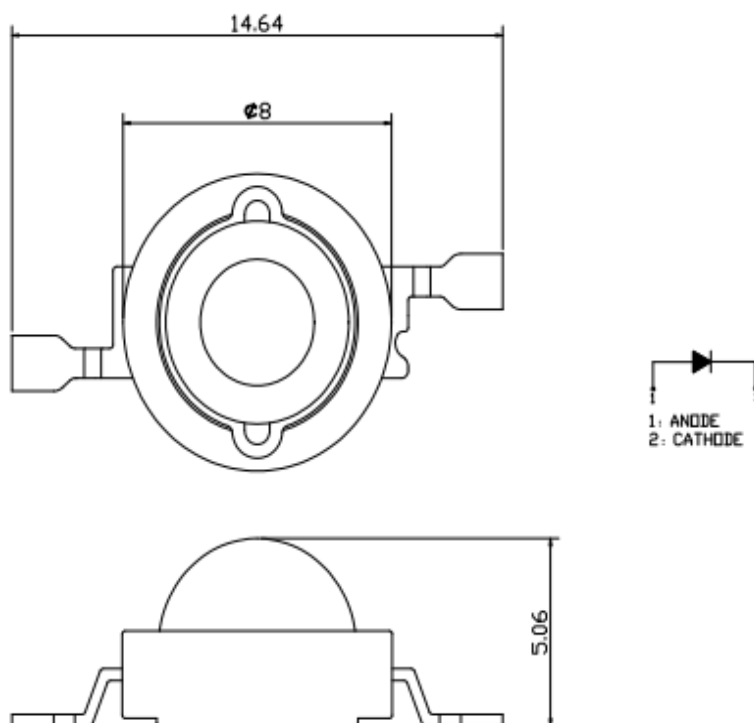
Technology support or Order ,pls email us :[powerledmanufacturer@gmail.com](mailto:powerledmanufacturer@gmail.com)



[www.snowdragonledhk.com](http://www.snowdragonledhk.com)

Good quality & Fast delivery

■ Mechanical Dimensions:  
(外观尺寸)



Note(备注):

1. All dimensions are in millimeters  
(所有尺寸的单位均为毫米)
2. All dimensions without tolerances are for reference only.  
(所有没标示公差的尺寸仅供参考)

Technology support or Order ,pls email us :[powerledmanufacturer@gmail.com](mailto:powerledmanufacturer@gmail.com)



■ Absolute Maximum Ratings (Ta = 25°C) :  
(最大额定值)

Items (项目)	Symbol (符号)	Absolute maximum Rating (最大额定值)	Unit (单位)
		UV (紫外)	
Power Dissipation * (功率)	P <sub>D</sub>	1400	mW
DC Forward Current (正向输入电流)	I <sub>F</sub>	350	mA
Peak Pulse Forward Current* (输入脉冲峰值电流)	I <sub>FP</sub>	700	mA
Average Forward Current (平均输入电流)	I <sub>avg</sub>	500	mA
Reverse Voltage (反向电压)	V <sub>R</sub>	--	V
LED Junction Temperature (结点温度)	T <sub>j</sub>	125	°C
Operating Temperature (工作温度)	T <sub>op</sub>	-30 ~ +80	°C
Storage Temperature (储存温度)	T <sub>stg</sub>	-40 ~ +100	°C
Manual Soldering Temperature (手工焊接温度)	T <sub>sol</sub>	Max.350°C ± 20°C for 3 sec Max	

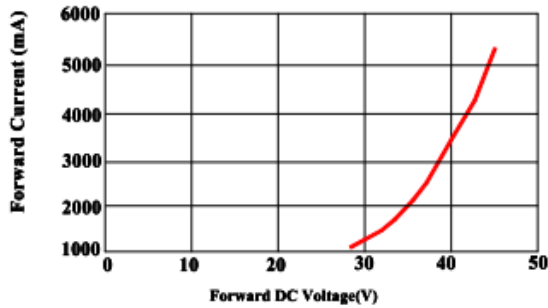
\*Pulse width ≤ 0.1msec Duty cycle ≤ 1/10(脉冲宽度 ≤ 0.1ms, 占空比 ≤ 1/10)

■ Notes (备注) :

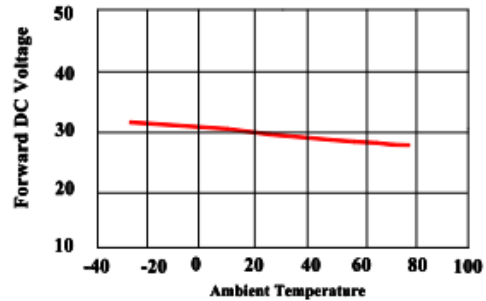
- 1.Absolute maximum ratings Ta=25°C.  
(Ta=25°C的最大额定值)
- 2.Tolerance of measurement of forward voltage±1V.  
(正向电压的测量公差为±1V)
- 3.Tolerance of measurement of Radiant Power ±5%.  
(发射功率的测量公差为±5%)



■ Typical Electrical/ Optical Characteristics Curves  
( $T_a=25^\circ\text{C}$  Unless Otherwise Noted) :  
(光电特性曲线图)



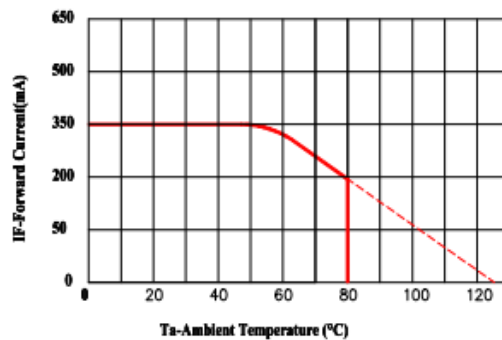
Forward current vs. Forward DC voltage



Forward DC Voltage vs. Ambient Temperature

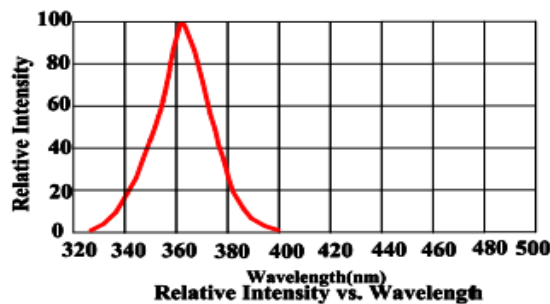
**Forward Current VS Ambient Temperature**

(正向电流-环境温度图)



**Wavelength Characteristics**

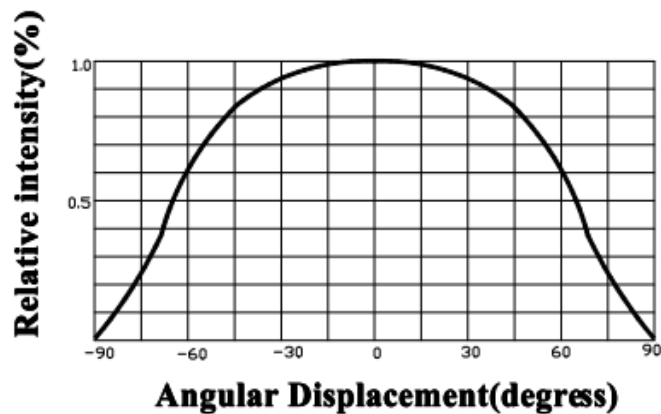
(波长特性图)



Relative Intensity vs. Wavelength



**Angular displacement VS Relative intensity**  
(角度位移-发光强度图)



■ Reliability (可靠性)

1. Test Items And Results

(测试项目与结果)

	Test Item (测试项目)	Reference Standard (参考标准)	Test Conditions (测试条件)	Test Hours/cycle (测试时间/周期)	Units Tested (单位)	Ac/Re (允收标准)
Operation Test (操作测试)	Operating Life Test (寿命实验)	Flux Degradatio> 3% average	T <sub>A</sub> =25°C ± 5°C, IF=350mA	1000 Hrs	22	0/22
Environment Test (环境测试)	High Temperature Storage (高温储存)	JEITA ED-4701 200 201	T <sub>A</sub> =100°C ± 5°C	1000 Hrs	22	0/22
	Low Temperature Storage (低温测试)	JEITA ED-4701 200 201	T <sub>A</sub> =-40°C ± 5°C	1000 Hrs	22	0/22
	High Temperature.& Humidity Storage 高温高湿储存	JEITA ED-4701 200 201	T <sub>A</sub> =85°C ± 5°C, RH=85% ± 5%RH	1000 Hrs	22	0/22
	Thermal Shock (冷热冲击)	JEITA ED-4701 300 307	-40° ± 5°C ↔ +85°C ± 5°C 30min dwell / 5 min transfer	50 Cycles	22	0/22
Soldering Test (手工焊接测试)	Solder ability (焊接性)		350 ± 5°C, 5 ± 1 sec	1 time Over 95%Wetting	22	0/22
	Resistance to Soldering Heat (耐焊性)		350 ± 5°C, 5 ± 1 sec	1 time	22	0/22

